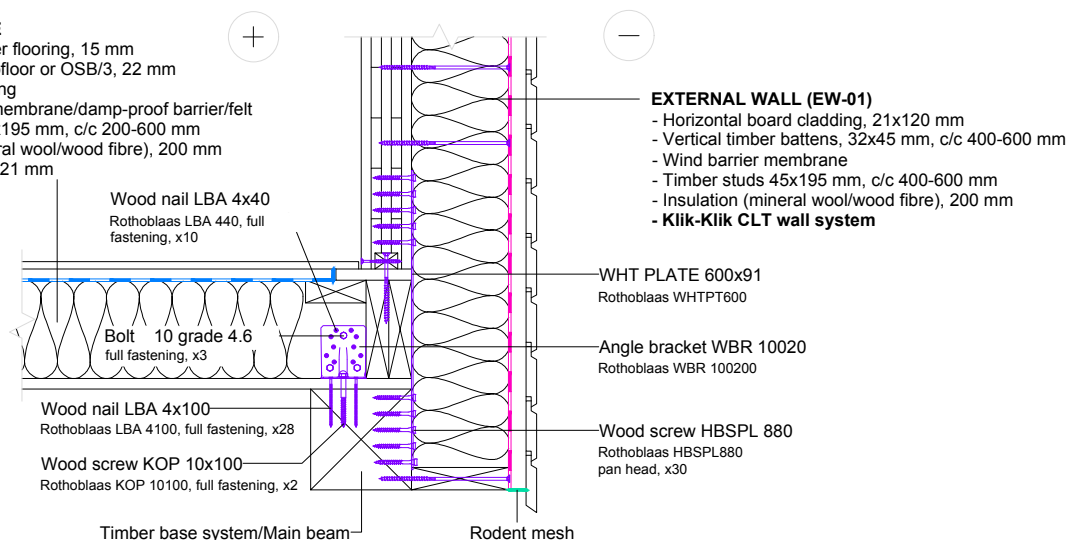


Foundation (timber frame) principle

FLOOR FRAME

- Parquet or timber flooring, 15 mm
- Forestia Thermofloor or OSB/3, 22 mm
- Underfloor heating
- Vapour barrier membrane/damp-proof barrier/felt
- Timber joist, 45x195 mm, c/c 200-600 mm
- Insulation (mineral wool/wood fibre), 200 mm
- Plywood plates, 21 mm



The contractor/supplier is responsible for the timber floor frame design.
Timber floor frame according to contractor/supplier. The thickness of timber floor frame, strength class for timber and connections according to contractor/supplier. Insulation according to contractor/supplier. Foundation for timber floor frame according to contractor/supplier.

I. These drawings contain standard solutions designed by KLIK-KLIK for AutoCAD software.
These drawings are intended for architects and structural engineers to use the KLIK-KLIK Wall System..

II. The structural interface details are so-called indicative general cross sections, they do not take a position on e.g. fastenings, structural strengths, etc.
Site-specific solutions and structure types are always determined by the sites structural designer according to the sites requirements. The exact dimensions of the structural layers and the performance values of the structural layers are determined in the structure types.
Variables depending on the dimensions and performance of the structural layers are:

- Load-bearing capacity and stability of the structure
- Building physical functioning of the structure as a whole + water vapour permeability, air tightness, thermal conductivity, weather resistance of the materials
- Achievable level of thermal insulation
- Fire compartment ability (EI) and fire endurance (R) of the structure
- Fire resistance class of the materials (flammability, smoke development, flammable drops)
- Fireproofing class of the surface layers of the structure for the background structure in the event of a fire
- Sound insulation level of the structure against traffic and aircraft noise

III. Fasteners only according to the engineering project.

KLIK KLIK
BUILD FAST'N'EASY

Property and copyright belong exclusively to the CLT FACTORY group of companies.